

China PEOPLE pneumatic component

Pneumatic valve , Solenoid valve , Pneumatic component , China Pneumatic, Cylinders



World Machine 500 / China Top 500 / China Famous Trademark / China Top Brand

- PEOPLE Pneumatic
- Product
- Valves
- Cylinder
- Pneumatic Component
- Air Preparation
- Pneumatic accessories
- News
- Tech Support
- Contact Us

MGP Series Compact Cylinder

Pneumatic cylinder >> Compact Cylinder > MGP Compact Cylinder Guided Actuator

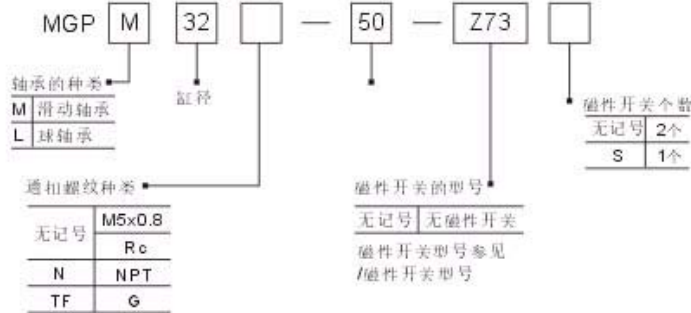
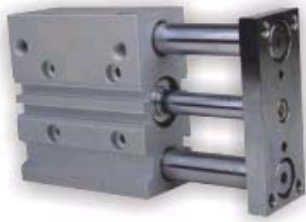
View technical date of MGP Series Compact Cylinder with PDF

Characteristics:

The MGP Series Compact Cylinder Guided Actuator is ideal for high loads and high impact applications. The slide is available in 10 bore sizes from 12 to 100mm. Both composite and ball bearing guides are available to suit a wide variety of needs, from pallet stopping to general pick and place.

- Four mounting styles standard: top, side, t-slot, and end/bottom mount
- Piping from two directions standard
- Auto switch ready for easy position sensing
- Long strokes up to 400mm standard
- End lock, air cushion, and heavy duty guide rod type available

Order code for MGP Series Compact Cylinders



Specifications for MGP Compact Cylinders

Bore(mm)	12	16	20	25	32	40	50	63	80	100
Working Medium	Air									
Action Type	Double Action									
Proof Woring Press.	1.56MP a									
Max. Working Press.	1.0MP a									
Min. Working Press.	0.12MP a									
Working Temp.	-10~60℃									
Piston Speed	50-500mm/s									
Cushion	Rubber Cushion									
Stroke Tolerance	+1.5mm									
Lubrication	Not required									
Port Size	M5X0.8		1/8			1/4		3/8		

Stroke for MGP Series Compact Cylinder

Pneumatic equipment directory

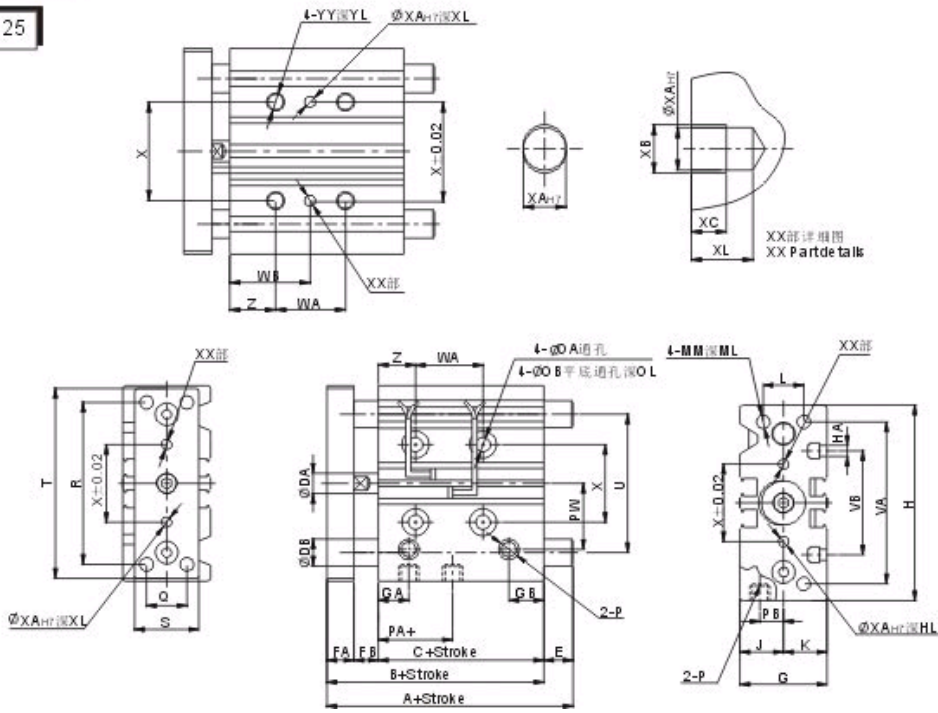
- PEOPLE group
- Product introduction
- Pneumatic components
- Pneumatic valves
- Solenoid valve
- Pneumatic cylinders
- Air preparation
- Pneumatic Fittings
- Pneumatic accessories
- Pneumatic equipments
- Pneumatic parts
- Industry News
- Technical support
- Pneumatic standards
- Events
- Contact Us

People website search

Pneumatic products

- S Air Treatment Component
- A Air Treatment Component

New products

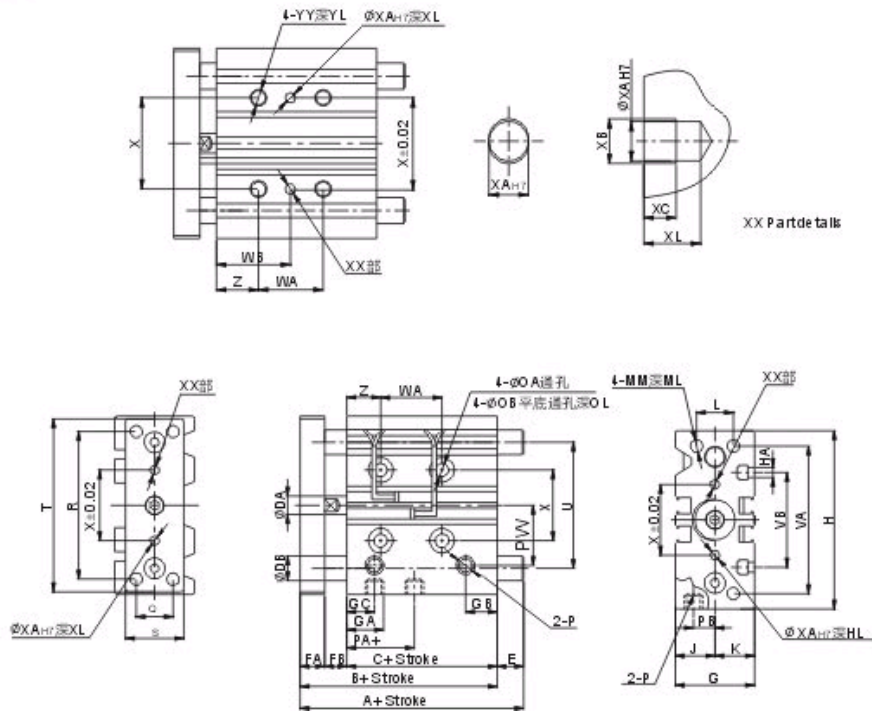


Dimension for MGP Series Compact Cylinder

Bore (mm)	(Mm) Standard stroke	B	C	DA	FA	FB	G	GA	GB	H	HA	J	K	L	MM	ML	NN	OA	OB	OL	P
		12	10 20 30 40	42	29	6	8	5	26	11	7.5	58	M4	13	13	18	M4X0.7	10	M4X0.7	4.3	8
16	50 75 100	46	33	8	8	5	30	11	8	64	M4	15	15	22	M5X0.8	12	M5X0.8	4.3	8	4.5	M5X0.8
20	20 30 40 50 75	53	37	10	10	6	36	10.5	8.5	83	M5	18	18	24	M5X0.8	13	M5X0.8	5.6	9.5	5.5	1/8
25	100 125 150 175 200	53.5	37.5	12	10	6	42	11.5	9	93	M5	21	21	30	M6X1	15	M6X1	5.6	9.5	5.5	1/8

PA	PB	PW	Q	R	S	T	U	VA	VB	WA			WB			X	XA	XB	XC	XL	YY	YL	Z
										30st	40st\100st	125st	30st	40st\100st	125st								
13	8	18	14	48	22	56	41	50	37	20	40	110	15	25	60	23	3	3.5	3	6	M5X0.8	10	5
15	10	19	16	54	25	62	46	56	38	24	44	110	17	27	60	24	3	3.5	3	6	M5X0.8	10	5
12.5	10.5	25	18	70	30	81	54	72	44	24	44	120	29	39	77	28	3	3.5	3	6	M6X1	12	17
12.5	13.5	28.5	26	78	38	91	64	82	50	24	44	120	29	39	77	34	4	4.5	3	6	M6X1	12	17

φ32-φ63



Bore (mm)	Standard stroke	B	C	DA	FA	FB	G	GA	GB	GC	H	HA	J	K	L	MM	ML	NN	OA	OB	OL	P
32	25 50 75 100 125 175 200	59.5	37.5	16	12	10	48	12.5	9	12.5	112	M6	24	24	34	M8X1.25	20	M8X1.25	6.6	11	7.5	1/8
40		66	44	16	12	10	54	14	10	14	120	M6	27	27	40	M8X1.25	20	M8X1.25	6.6	11	7.5	1/8
50		72	44	20	16	12	64	14	11	12	148	M8	32	32	46	M10X1.5	22	M10X1.5	8.6	14	9	1/4
63		77	49	20	16	12	78	16.5	13.5	16.5	162	M10	39	39	58	M10X1.5	22	M10X1.5	8.6	14	9	1/4

PA	PB	PW	Q	R	S	T	U	VA	VB	WA			WB			X	XA	XB	XC	XL	YY	YL	Z
										25st	75 75 100st	100st	25st	75 75 100st	100st								
7	15	34	30	96	44	110	78	98	63	24	48	124	33	45	83	42	4	4.5	3	6	M8X1.25	16	21
13	18	38	30	104	44	118	86	106	72	24	48	124	34	46	84	50	4	4.5	3	6	M8X1.25	16	22
9	21.5	47	40	130	60	146	110	130	92	24	48	124	36	48	86	66	5	6	4	8	M10X1.5	20	24
14	28	55	50	130	70	158	124	142	110	28	52	128	38	50	88	80	5	6	4	8	M10X1.5	20	24

Tags: Compact Cylinder

[Pneumatic cylinders](#) | [TrackBack](#)

« solenoid valve symbol

[China Valve Industry Association \(CVA\)](#) »

Related pneumatic products: