

# China PEOPLE pneumatic component

Pneumatic valve , Solenoid valve , Pneumatic component , China Pneumatic, Cylinders

- PEOPLE Pneumatic
- Product
- Valves
- Cylinder
- Pneumatic Component
- Air Preparation
- Pneumatic accessories
- News
- Tech Support
- Contact Us

## TN Series Twin-Rods Cylinder

[Pneumatic cylinder](#) > [Twin-Rods Cylinder](#) > [TN Series Twin-Rods Cylinder](#)

### TN Series Twin-Rods Cylinder



View technical date of TN Series Twin-Rods Cylinder with PDF

NAME: **TN Series Twin-Rods Cylinders**

Series code

TN: Double rods double action type

TND: Double rods double ends type

Bore size: 20

Stroke: 50

Magnetic ring code

Blank: without magneric ring

Swith magnetic ring

#### Symbol for TN Series Twin-Rods Cylinder



#### Specifications for TN Twin-Rods Cylinders

Bore	10	16	20	25	32
Action mode	Double Action				
Working Medium	Air				
Pressure range bar(MPa)	0.1 0.9				
Proof pressure(MPa)	1.35				
Working temperature°C	-5 70				
Working speed range(mm/s)	100-500				
Adjustable Stroke(mm)	-10-0				
Cushion type	Cushion Rubber				

#### Pneumatic equipment directory

- PEOPLE group
- Product introduction
- Pneumatic components
- Pneumatic valves
- Solenoid valve
- Pneumatic cylinders
- Air preparation
- Pneumatic Fittings
- Pneumatic accessories
- Pneumatic equipments
- Pneumatic parts
- Industry News
- Technical support
- Pneumatic standards
- Events
- Contact Us

#### People website search

#### Pneumatic products

- S Air Treatment Component
- A Air Treatment Component

#### New products

Non-rotate tolerance	0.4°	0.3°
Port Size	M5×0.8	1/8

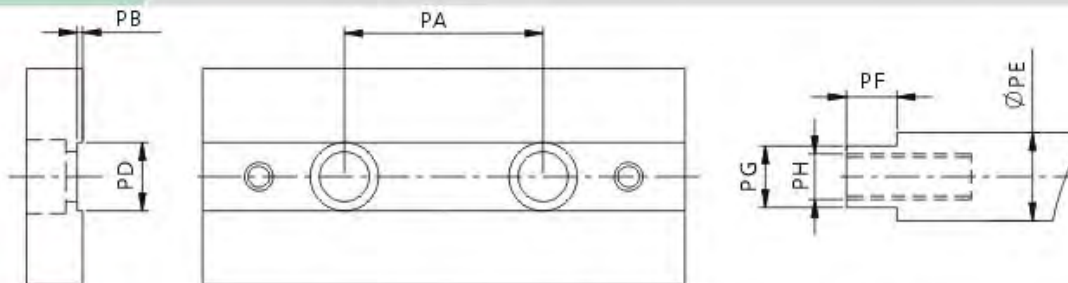
### Stroke for TN Series Twin-Rods Cylinder

Bore(mm)	Standard Stroke	Max.Stroke	Available Stroke
10	10 20 30 40 50 60 70	70	100
16	10 20 30 40 50 60 70 80 90 100 125 150	150	200
20	10 20 30 40 50 60 70 80 90 100 125 150	150	200
25	10 20 30 40 50 60 70 80 90 100 125 150	150	200
32	10 20 30 40 50 60 70 80 90 100 125 150	150	200

### Packing seal list for Twin-Rods Cylinder

Bore/Qty	Front Cap O Ring	Piston O Ring	Rear Cap O Ring	Rod "O" ring
	1	2	2	1
10	PUD-6	APA-10	10×1.5	P12
16	PDU-8	APA-16	16×1.5	P16
20	PDU-10	APA-20	20×1.5	P20
25	PDU-12	APA-25	25×1.5	P20
32	PDU-16	APA-32	32×1.5	P25

### Front plate Dimension(mm)



	PA	PB	PC	PD	PE	PF	PG	PH
10	18	0.5	6.2 dp. 3.5mm, Thru:4.5	5.2	6	3	5	M3×0.5(dp.)5mm
16	24	1	7.8 dp. 4.6mm, Thru:4.5	6.2	8	3	6	M4×0.7(dp.)6mm
20	28	1	11 dp. 6.8mm, Thru:4.5	8.2	10	3	8	M6×1(dp.)8mm
25	34	1	11 dp. 6.8mm, Thru:4.5	10.2	12	3	10	M6×1(dp.)8mm
32	42	2	17 dp. 12mm, Thru:4.5	14	16	3	14	M10×1.5(dp.)14mm