

China PEOPLE pneumatic component

Pneumatic valve , Solenoid valve , Pneumatic component , China Pneumatic, Cylinders



World Machine 500 / China Top 500 / China Famous Trademark / China Top Brand

- [PEOPLE Pneumatic](#)
- [Product](#)
- [Valves](#)
- [Cylinder](#)
- [Pneumatic Component](#)
- [Air Preparation](#)
- [Pneumatic accessories](#)
- [News](#)
- [Tech Support](#)
- [Contact Us](#)

2W Series Solenoid Valve

[Pneumatic valves](#) > [Solenoid Valve](#) > 2W Series Solenoid Valve



View technical date of 2W Series Solenoid Valve with PDF

Specification:

2w:2 prots 2 positions'solenoid valve-direct action

Orifice:

025:2.5mm 040:4.0mm 160:16mm 200:20mm

250:25mm 350:35mm 400:40mm 500:50mm

Port Size:

06:18/" 08:1/4" 10:3/8" 15:1/2" 20:3/4" 25:1" 35:1 1/4" 40:1 1/2" 50:2"

Voltage:

DC24V AC110V 50Hz/60Hz DC12V AC24V 50Hz/60Hz

AC220V 50Hz/60Hz

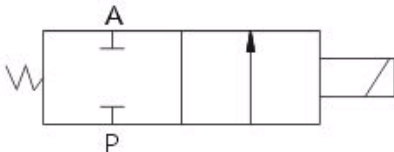
AC380V 50Hz/60Hz

Order code for 2W Series Solenoid Valve



2W	025	-	08	-	AC220V
Specification	Orifice		Port Size		Voltage
2W:2 ports 2 positions'solenoid valve-direct action	160:16mm 200:20mm 250:25mm 350:35mm 400:40mm 500:50mm		10: 3/8 " 15: 1/2 " 20: 3/4 25: 1 35: 1 1/4" 40: 1 1/2" 50: 2"		DC12V DC24V AC24V 50Hz/60Hz AC110V Hz/60Hz AC220V 50Hz/60Hz AC380V 50Hz/60Hz

Symbol for 2W Series Solenoid Valve



Specifications for 2W Series Solenoid Valve

Model	2W025-06	2W025-08	2W040-10
Working Fluid	Air water oil		
Action Method	Direct action		
Style	Normally closed		
Orifice	2.5		4
CV flow factro	0.23		0.60
Port size	1/8"	1/4"	3/8"

Pneumatic equipment directory

- [PEOPLE group](#)
- [Product introduction](#)
- [Pneumatic components](#)
- [Pneumatic valves](#)
- [Solenoid valve](#)
- [Pneumatic cylinders](#)
- [Air preparation](#)
- [Pneumatic Fittings](#)
- [Pneumatic accessories](#)
- [Pneumatic equipments](#)
- [Pneumatic parts](#)
- [Industry News](#)
- [Technical support](#)
- [Pneumatic standards](#)
- [Events](#)
- [Contact Us](#)

People website search

Pneumatic products

- [S Air Treatment Component](#)
- [A Air Treatment Component](#)

New products

Fluid Viscidity	<20 CST
Working pressure	0-0.7Mpa
Proof pressure	1.0
Ambient temperature℃	-5 80
Rated voltage range	±10%
Body material	Brass
Seal material	NBR EPDMor VITON

Tags: solenoid valve

| [Solenoid valve](#) | [TrackBack](#)

« [Air treatment](#)

[2V Series Solenoid Valve](#) »

✚ Related pneumatic products:

[VF Series Solenoid Valve](#)
[Solenoid Valve](#)

[About us](#) | [Sitemap](#) | [Copyright](#) | [Help](#) | [Cooperate](#) | [Down](#) | [Guestbook](#) | [Contact us](#)

Copyright 2007 **China PEOPLE pneumatic equipment Co., Ltd** Some Rights Reserved.