



**ASC Series Flow Control Valve**

Please contact [INFO@PneumaticPart.com](mailto:INFO@PneumaticPart.com)

[Pneumatic valves](#) > [Flow control valve](#)



View technical date of ASC Series Flow Control Valve with PDF

**Order code for ASC Flow control valve**



ASC	300	10
Model ASC:Flow control valve	Series Code 1:100 Series 2:200 Series 3:300 Series	Port Size M5:M5 06:1/8" 08:1/4"

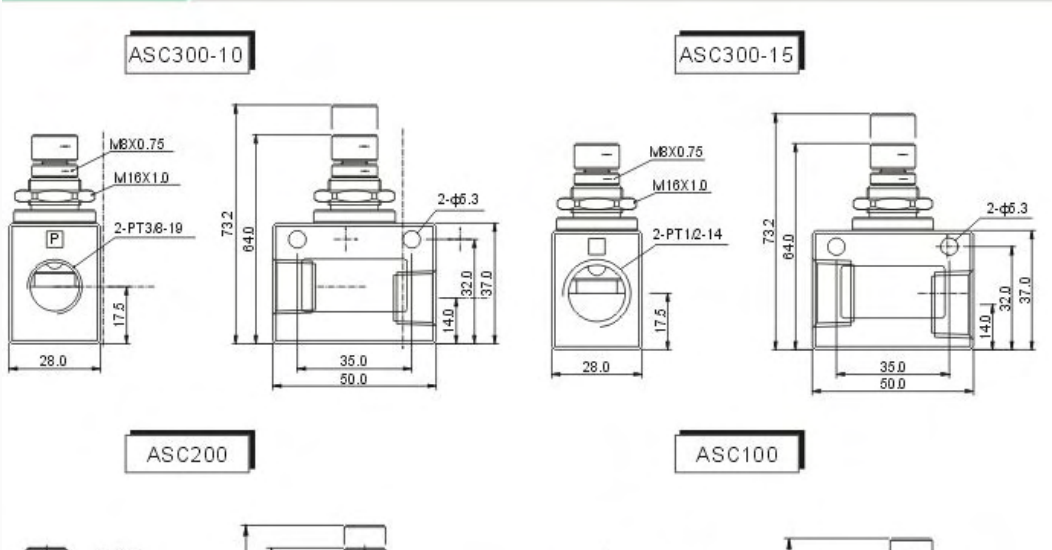
**Symbol for ASC Flow control valve**



**Specifications for ASC Flow control valve**

Model	RE-01	RE-02	RE-03	RE-04
Port Size	1/8"	1/4"	3/8"	1/2"
Working medium	Air			
Pressure range	0~0.95Mpa			
Temp.Range	-0~60℃			

**Overall Dimension for ASC Flow control valve (mm)**



**Pneumatic equipment directory**

- [PEOPLE group](#)
- [Product introduction](#)
- [Pneumatic components](#)
- [Pneumatic valves](#)
- [Solenoid valve](#)
- [Pneumatic cylinders](#)
- [Air preparation](#)
- [Pneumatic Fittings](#)
- [Pneumatic accessories](#)
- [Pneumatic equipments](#)
- [Pneumatic parts](#)
- [Industry News](#)
- [Technical support](#)
- [Pneumatic standards](#)
- [Events](#)
- [Contact Us](#)

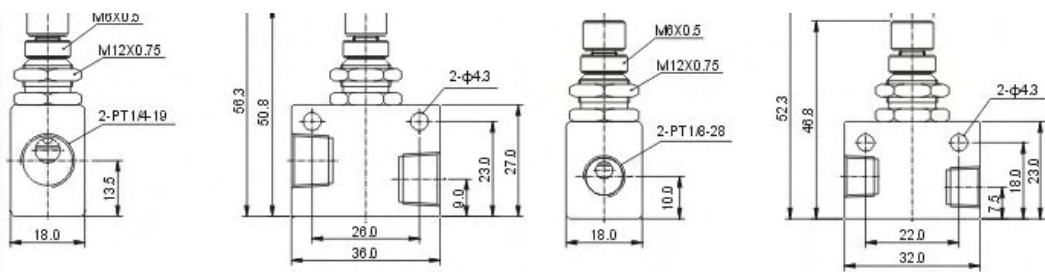
**People website search**

**Pneumatic products**

- [S Air Treatment Component](#)
- [A Air Treatment Component](#)

**New products**



Tags: [flow control valve](#)

[Pneumatic valves](#) | [TrackBack](#)

« [Flow control valve](#)

[JM series Mechanical valve](#) »

Related pneumatic products:

[Flow control valve](#)

[About us](#) | [Sitemap](#) | [Copyright](#) | [Help](#) | [Cooperate](#) | [Down](#) | [Guestbook](#) | [Contact us:INFO@PneumaticPart.com](#)

Copyright 2007 China PEOPLE pneumatic equipment Co., Ltd Some Rights Reserved.