



Hand Operated Valve

Please contact INFO@PneumaticPart.com

Pneumatic valves > Hand Operated Valve



Hand Operated Valve 's PDF file

Order code for Hand Operated Valve



KA serice

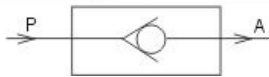


CV Serice

KA
Code
KA: Check valve

10
Port Size
06: 1/8"
08: 1/4"
10: 3/8"
15: 1/2"
20: 3/4"
25: 1"

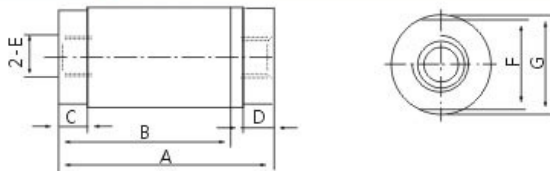
Symbol for Hand Operated Valve



Specifications for Hand Operated Valve

Model	KA06	KA08	KA10	KA15	KA20	KA25
Medium	Air					
Port Size code	06	08	10	15	20	25
Port Size	1/8"	1/4"	3/8"	1/2"	3/4"	1"
Orifice size mm' (Cv)	18(1)	27(1.5)	60(3.33)	73(4.06)	230(12.78)	260(14.044)
Pressure range	0.03~0.95Mpa					
Temp. Range	1.5MPa					
Material of body	-5~60℃					
	Aluminum alloy					

Overall Dimension for Hand Operated Valve (mm)



Type	A	B	C	D	E	F	G
KA06	51.5	41.5	7	7	1/8"	22	φ24
KA08	51.5	41.5	7	7	1/4"	22	φ24
KA10	68.5	58.5	8	8	3/8"	32	φ35
KA15	68.5	58.5	8	8	1/2"	32	φ35
KA20	95.5	81	8	8	3/4"	47	φ50
KA25	95.5	81	8	8	1"	47	φ50

Tags: pneumatic valve hand operated valve

| [Pneumatic valves](#) | [TrackBack](#)

Pneumatic equipment directory

- [PEOPLE group](#)
- [Product introduction](#)
- [Pneumatic components](#)
- [Pneumatic valves](#)
- [Solenoid valve](#)
- [Pneumatic cylinders](#)
- [Air preparation](#)
- [Pneumatic Fittings](#)
- [Pneumatic accessories](#)
- [Pneumatic equipments](#)
- [Pneumatic parts](#)
- [Industry News](#)
- [Technical support](#)
- [Pneumatic standards](#)
- [Events](#)
- [Contact Us](#)

People website search

Pneumatic products

- [S Air Treatment Component](#)
- [A Air Treatment Component](#)

New products

✚ Related pneumatic products:

[Quick exhaust valve](#)

[Foot operated valve](#)

[JM series Mechanical valve](#)

[Flow control valve](#)

[Check valve](#)

[About us](#) | [Sitemap](#) | [Copyright](#) | [Help](#) | [Cooperate](#) | [Down](#) | [Guestbook](#) | [Contact us:INFO@PneumaticPart.com](#)

Copyright 2007 **China PEOPLE pneumatic equipment Co., Ltd** Some Rights Reserved.